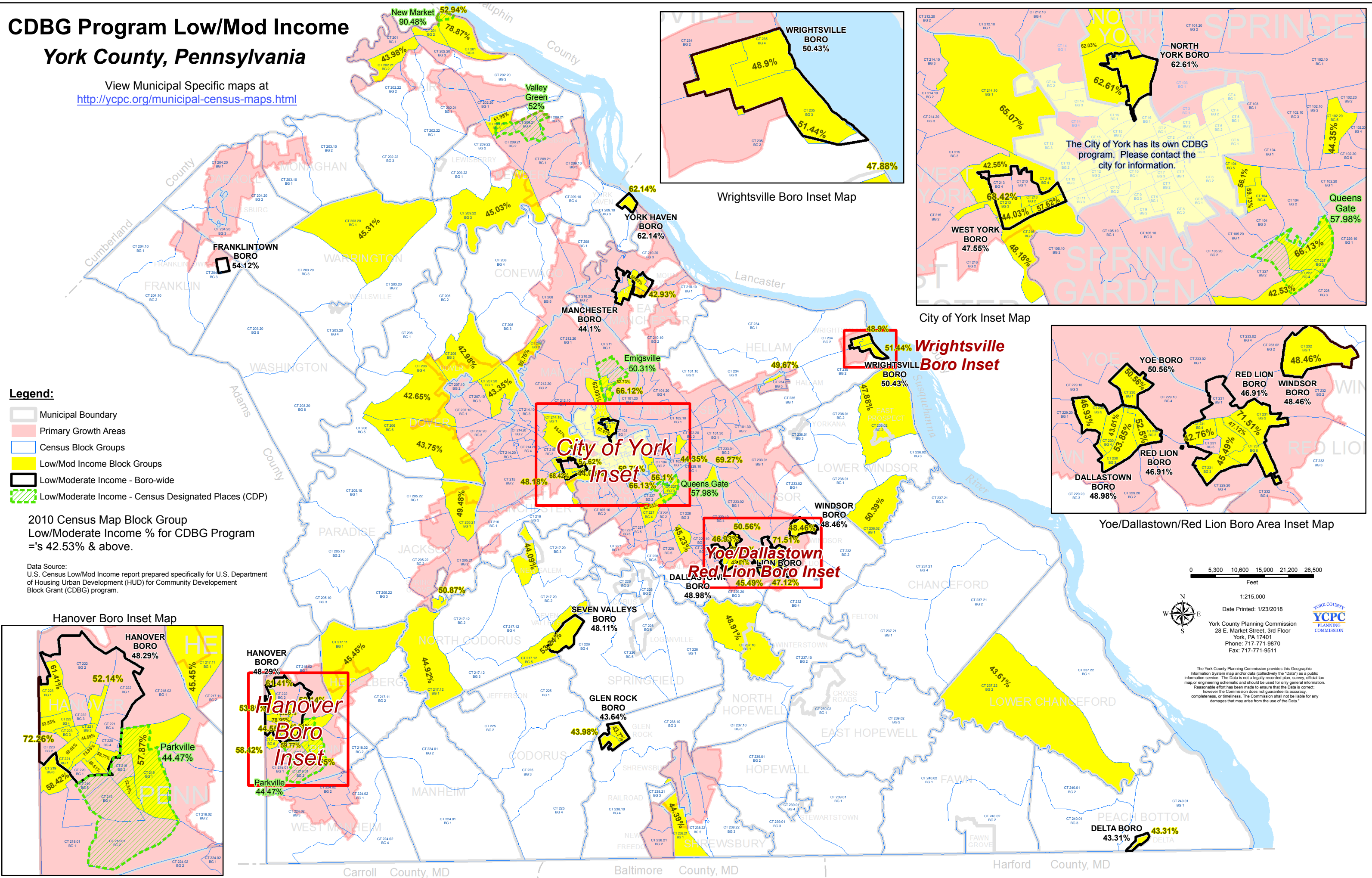


CDBG Program Low/Mod Income York County, Pennsylvania

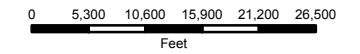
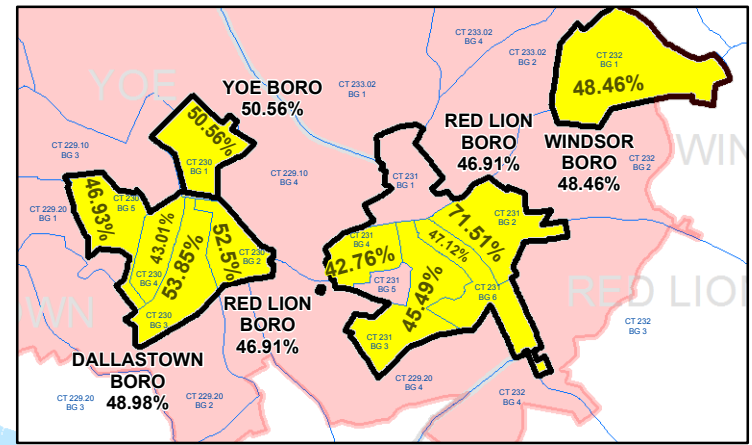
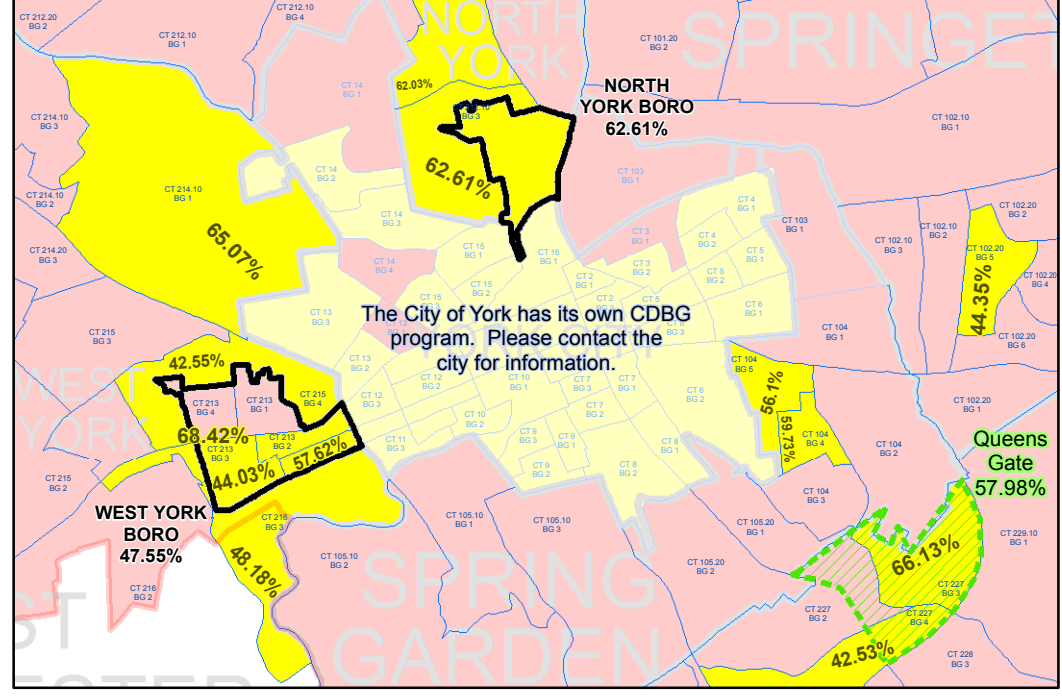
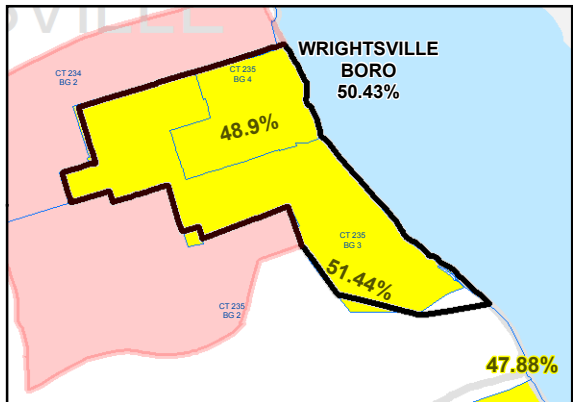
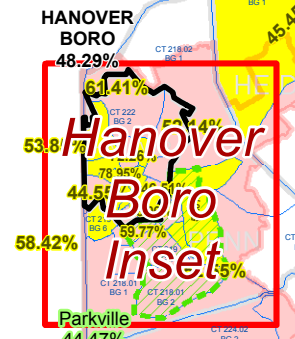
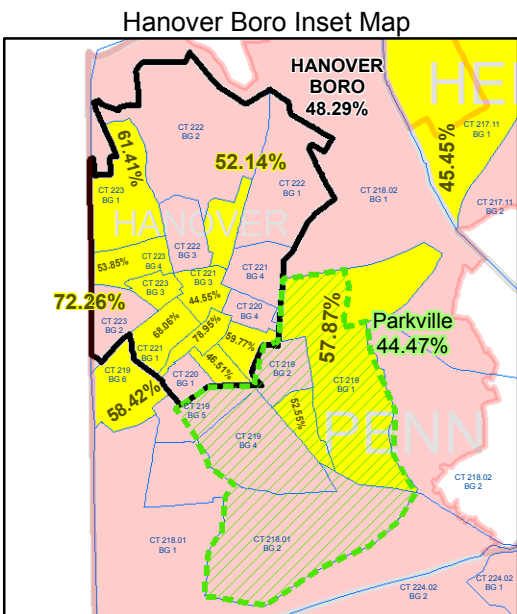
View Municipal Specific maps at
<http://ycpc.org/municipal-census-maps.html>



- Legend:**
- Municipal Boundary
 - Primary Growth Areas
 - Census Block Groups
 - Low/Mod Income Block Groups
 - Low/Moderate Income - Boro-wide
 - Low/Moderate Income - Census Designated Places (CDP)

2010 Census Map Block Group
Low/Moderate Income % for CDBG Program
=s 42.53% & above.

Data Source:
U.S. Census Low/Mod Income report prepared specifically for U.S. Department
of Housing Urban Development (HUD) for Community Development
Block Grant (CDBG) program.



1:215,000
Date Printed: 1/23/2018
York County Planning Commission
28 E. Market Street, 3rd Floor
York, PA 17401
Phone: 717-771-9870
Fax: 717-771-9511

The York County Planning Commission provides this Geographic Information System map and/or data (collectively the "Data") as a public information service. The Data is not a legally recorded plan, survey, official tax map or engineering schematic and should be used for only general information. Reasonable effort has been made to ensure that the Data is correct; however, the Commission does not guarantee its accuracy, completeness, or timeliness. The Commission shall not be liable for any damages that may arise from the use of the Data.

Carroll County, MD | Baltimore County, MD | Harford County, MD